



WELCOMEBRAZIL
Mice experts in Brazil.

W elcome Brazil is the complete solution for welcoming services in Brazil.

Founded in 1999, understands the destinations, culture and expertise of tourism businesses in Brazil and combines it with the expectations of your visitors regarding service standards and the delivery of genuine experiences.

Specialized in incentive groups, events, team building, conferences, delegations, roadshows, fairs, special interest groups, international business missions, and business executives.



WELCOMEBRAZIL

ur Portfolio **Services**

- Destination Management
- Event Design & Execution
- Production Services
- Live Music & Entertainment
- Meeting and Conference Management
- Tours and Attractions
- Teambuilding
- Ground transportation and air logistic
- Branding & Design



C ompany Essentials

- A company to educate, build a happy, motivated and well paid team
- OSS – one stop boutique agency for MICE services in Brazil
- Extensive experience with Fortune 500 corporations and emerging startups
- Caters to premium and specialist segments, meetings and incentives
- Team of experienced creative destination specialists
- 2.000.000 usd coverage insurance and civil liability



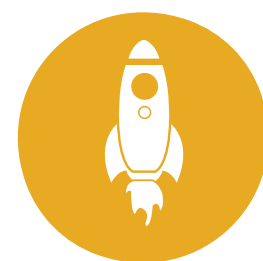
About Welcome Brazil

Since 1999



Headquarter in São Paulo,
Office in Rio, operationnal
bases in Salvador, praia do
Forte, Foz do iguaçu, paraty,
pantanal, Manaus, Trancoso.

On-line, proccess oriented
logistics control system
avoiding delivery failures.



Team with 45 experienced
MICE professionals

Support
24 x 7



Procurement, bidding and
legal departments to take
care of your interests



Event
Emergency Plans



DMC Group:

WELCOMEBRAZIL DMCBRAZIL DMC PERFORMA DMC MEDIA OOXy



WELCOMEBRAZIL

Clients trust in Welcome Brazil



WELCOMEBRAZIL

Cases

In Roche Diagnostics convention held in Bahia, Welcome Brazil provided an integrated delivery solution which involved a complex logistic for accommodation, transportation, event security infrastructure and also onsite coordination and production with simultaneous meeting rooms, team building activities and themed dinners.

Goals: reward employees and motivate the team to the challenges of the coming year.
Goals accomplished!



When: March 2016

Number of guests: 400

From: Brazil and Worldwide Roche employees

Destination: Praia do Forte, Bahia



Cases

Welcome Brazil provide experiences that exceed expectations. In an event held in Itatiba, countryside of São Paulo city, the clients from Bayer CropScience had a week full of networking opportunities, meetings and also integration with a creative program involving tour in plantations, soccer activity and 4x4 driving experience.

Goals: promote integration among company employees from Europe and Brazil. Goals accomplished!



Bayer CropScience

When: September 2016

Number of guests: 35

From: Germany

Destination: Itatiba, São Paulo



Cases

The incentive program held in Foz do Iguaçu was specially customized for a group of VIP directors of companies from Denmark.

The program contemplated a private visit to Iguaçu waterfalls, an unexpected safari in the water and all logistics involved for luxury accommodation, transportation and private meals.

Goals: promote a special program to entertain and enchant customers with Brazilian culture. Goals accomplished!



Due Travel

When: November 2017

Number of guests: 11

From: Denmark

Destination: Foz do Iguaçu, Paraná



WELCOMEBRAZIL

Cases

The Global Child Forum event brought together leaders of businesses, governments, academics and civil society in São Paulo. Welcome Brazil was responsible for logistics services besides graphic materials and special attractions related to Brazilian culture.

Goals: unite world leaders by promoting the debate at a high quality event. Goals accomplished!



When: April 2017

Number of guests: 450

From: Sweden and worldwide business directors

Destination: São Paulo





A bit of our Destinations

Location: Eastern South America
Capital: Brasilia
Official Language: Portuguese
Population: 207,350,000
Currency: Real
Climate: Tropical
Coastline: 7,491 km



WELCOMEBRAZIL



A mazonas

The largest and most biodiverse rainforest of the Earth. The forests in the region concentrate 60% of all forms of life in the planet. The forest combined with the savannah, floodplains and rivers – is a region of immense diversity, sheltering more than 30,000 plant species, 1,800 fish, 1,300 bird species, 311 mammals and 165 types of amphibian.



What to do:

- Rio Negro cruises
- Jungle Lodgement
- Visit aboriginal groups
- Historical buildings
- Meeting of waters
- Birdwatching

Location: North region

Weather: Humid equatorial

Keywords: Rainforest, fauna, flora, jungle lodges Manaus historical

Temperature range: From 18C/64.4 F to 32C/89.6F

Raining season: Dec/Mar

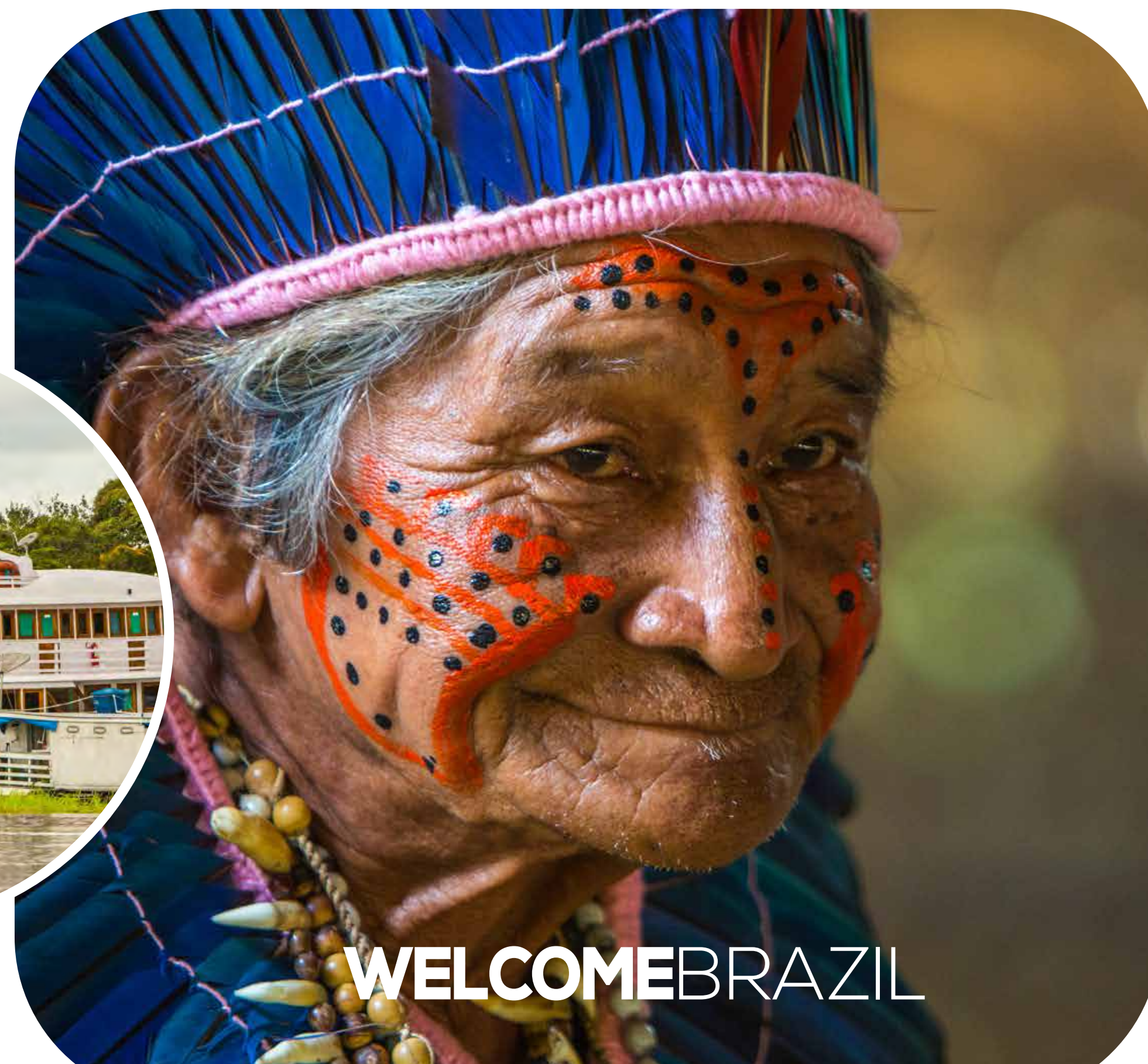
Dry season: Jun/Nov

International Airport:

Eduardo Gomes

Convention Center Capacity:

20.000



WELCOMEBRAZIL



Foz do Iguaçu

From miles away, you'll see mist rising up as the water from Iguazu Falls plunges a height of up to 90 m (295 ft). This total of 275 waterfalls form the largest chain of waterfalls around the globe. Although Iguassu is best known for their waterfalls, the surrounding jungle is well worth including in your explorations. A plethora of animals and birds make their home in the lush vegetation around the Iguassu National Park. There are also a number of other highlights in this region such as The San Ignacio Jesuit Mission Ruins, The Itaipu Dam, and more.



What to do:

- Macuco Jet Boat Safari
- Bird's Park
- Helicopter Tour
- Marco das Américas
- Itaipu Dam Tour
- Views of Iguassu Falls

Location: South region

Weather: subtropical, mesothermal, with rains distributed over every month of the year

Key words: Waterfalls, national park, natural heritage.

Temperature range: from 5C/41F to 30C/86F

Season: is a year-round destination.

International Airport: Foz do Iguaçu/Cataratas

Convention Center Capacity: 5.000



WELCOMEBRAZIL



Ouro Preto

The city of Ouro Preto, in Minas Gerais, is well known for its colonial architecture. It was the first Brazilian city to be considered a world heritage site by Unesco in 1980, and is home to a magnificent Baroque architectural ensemble, one of the best preserved in the world.



What to do:

- Aleijadinho Museum
- Street Carnival
- Churches and architectural
- Mines

Location: Southeastern Region

Weather: Tropical, warm and humid

Key words: aleijadinho, street carnival, architecture, mines, barroque

Temperature range: 6 °C a 28 °C

International Airport:

Tancredo Neves (BH)

Convention Center Capacity:
200



WELCOMEBRAZIL



Pantanal

Pantanal an ecological paradise right in the heart of Brazil. It is the largest flooded lowland on the planet, and the third largest environmental reserve in the world with 122 species of mammals and 656 species of birds. Recognized by Unesco as a World Heritage site.



What to do:

- Hiking
- Boating
- Night Watching
- Pantaneiro Day
- Jaguar trekking tour
- Sport Fishing
- Bird Watching
- Bonito

Location: Mid-West region

Weather: dry and cold, rainy and hot

Keywords: flooded lowland, landscape, cultural traditions, farms.

Temperature range: from 21C/69.8F to 89.6F

Rain period: Dec/Mar

Airport: Bonito

Convention Center Capacity: 2.000





Paraty

The city is on the extreme south portion of Rio de Janeiro, and is home to countless beaches, islands and about six waterfalls. Beautiful colonial city, considered a National Historical Monument, it preserves until today its numerous natural and architectural charms. In the 18th century, Paraty was an important port for transport gold and precious stones.



What to do:

- Islands
- Historical center
- Beaches
- FLIP (Paraty International Literary Festival)
- Churches and architectural
- Nature

Location: Southeastern region

Weather: Tropical, warm and humid

key words: History, beaches, natural

Temperature range: 12 C/53.6F to 38/100.4 F

Rain period: Dec/Mar

International Airport: Santos Dummont / Galeão (RJ)

Visits Capacity: 11.000



WELCOMEBRAZIL



Rio de Janeiro

Rio is often known by its nickname "The Marvelous city" and is famous for its natural settings, its carnival celebrations, the Sugar Loaf Mountain, the Corcovado, samba, bossa nova and beaches such as Copacabana, Ipanema and Leblon.



What to do:

- Sugar Loaf
- Corcovado
- Teatro Municipal
- Ipanema
- Maracanã Stadium
- Baia de Guanabara
- Tijuca Forest

Location: Southeastern region

Weather: Tropical, pleasant weather all year long

Key words: Sugar loaf, Carnival, Copacabana, Corcovado.

Temperature range: from 25C/77F to 38C/100.4F

Rain period: Jun/Sep

International Airport: Santos Dummont / Galeão

Convention Center Capacity: 20.500



WELCOMEBRAZIL



Salvador

The first capital of Brazil has a visible African influence in its culture. Salvador has an intense calendar of popular events like the Carnival and it's a venue of great religious celebrations. The Salvador Historical Center or "Pelourinho", was declared a Heritage of Humanity by UNESCO.



What to do:

- Baía de Todos os Santos
- Mercado Modelo
- Elevador Lacerda
- Pelourinho
- Convento de São Francisco
- Costa do Sol

Location: Northeastern region

Weather: hot and humid climate. It is typically tropical.

Key words: African culture, carnival, history, religion.

Temperature range: from 25C/77F to 38C/100.4F

Rain period: Jun/Sep

International Airport: Luiz Eduardo Magalhães

Convention Center Capacity: 5,000





São Paulo

São Paulo is the fourth most populous city in the world, and the largest in the Southern Hemisphere. Almost 12 million people live within its 1.530 sq kilometers. Forged from a melting pot of nationalities, cultures, philosophies, and ideals, this huge and pioneering metropolis is truly cosmopolitan by vocation and choice



What to do:

- Paulista Avenue
- Ibirapuera Park
- MASP
- Soccer Museum
- Liberdade
- Mercado Municipal

Location: Southeastern Region

Weather: Tropical

Key words: Business, diversity of cultural, cosmopolitan.

Temperature range: from 18C/64.4F to 32C/89.6F

Rain period: Dec/Mar

International Airport:

Guarulhos Airport Congonhas / Viracopos

Convention Center Capacity:
25.000





Trancoso

The heart of Trancoso is the town square known as the "Quadrado", overlooking the ocean has many historical sites plus many small stores with local arts and crafts and superb dining. The village has kilometers of unspoiled golden sand beaches bordered to the north and south by rivers. Discover why Mario Testino, Monica Belluci and others celebrities, rest and fun in Trancoso.



What to do:

- Beaches
- Quadrado
- Pures and Cigarettes handmade factory
- Rio da Barra beach
- Praia do Espelho Beach
- Nightlife

Location: Northeastern region

Weather: Semi-tropical
humid

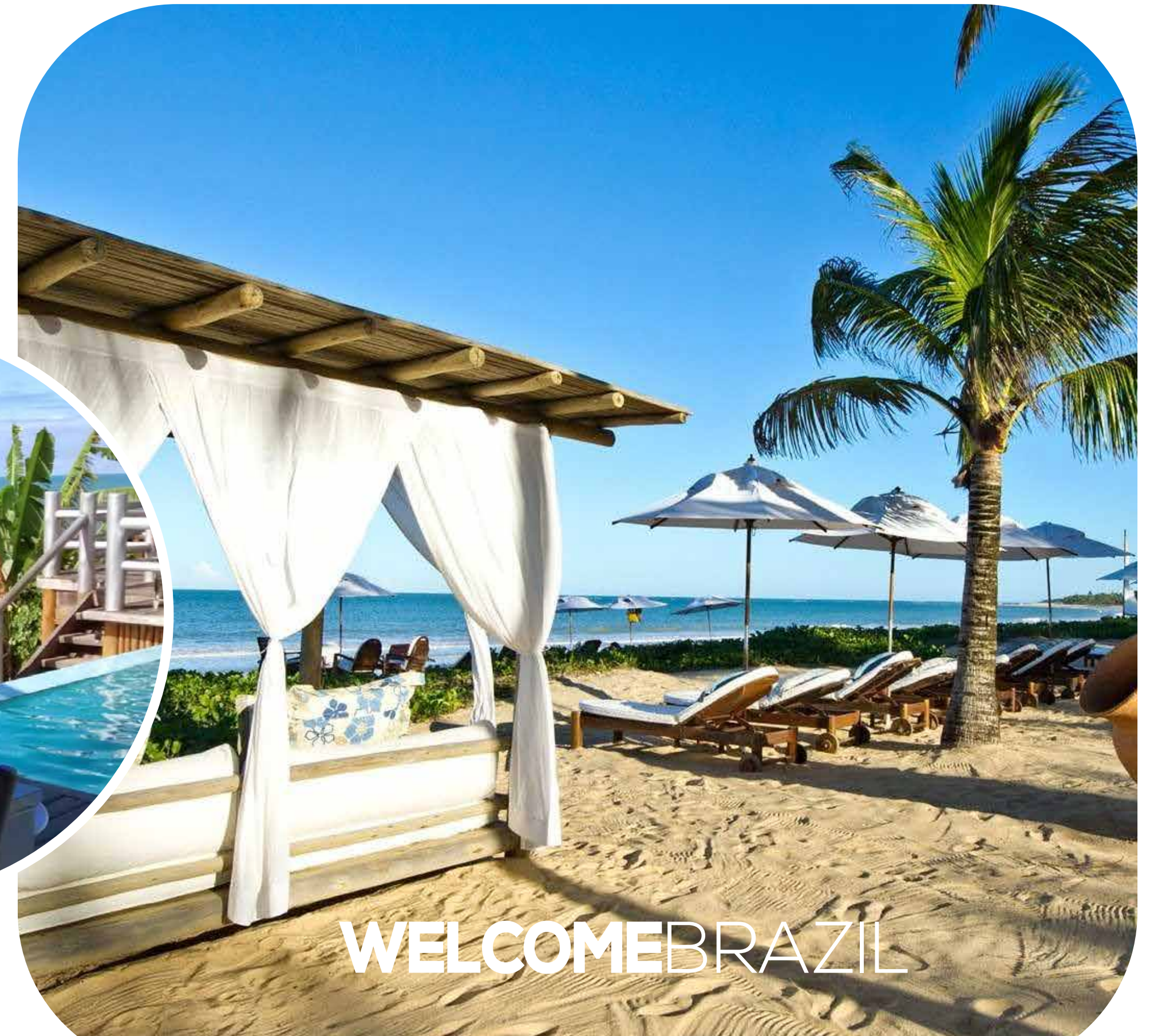
Key words: Quadrado,
beaches, natural beauty

Temperature range: from
19C/66F to 29C/84F

Rain period: Jun/Aug

International Airport: Luiz
Eduardo Magalhães / Porto
Seguro

Capacity: 1.000



Contact us



São Paulo / Rio de Janeiro Office
Phone: 55 11 2575 1120 ext. 1194

www.welcomebrazil.com.br

Skype: Welcome Brazil
Email: receptive@welcomebrazil.com.br



WelcomeBr



[/welcomebrazil2](https://www.facebook.com/welcomebrazil2)



Welcome Brazil



[@welcomebrazil2](https://www.instagram.com/welcomebrazil2)



[welcome-brazil](https://www.linkedin.com/company/welcome-brazil)



[@welcomebrazil2](https://twitter.com/welcomebrazil2)



[/WelcomeBrazil](https://www.youtube.com/WelcomeBrazil)



DMC Group:



WELCOMEBRAZIL